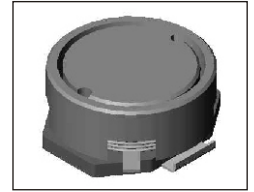


SMT Power Inductor

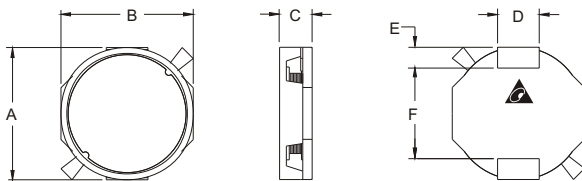
SIWC1335 Type

Features

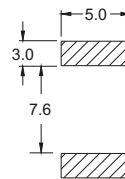
- RoHS compliant.
- Low profile (3.8mm max. height) SMD type.
- Magnetically shielded, suitable for high density mounting
- High energy storage and low DCR.
- Provided with embossed carrier tape packing.
- Ideal for power source circuits, DC-DC converter, DC-AC inverters inductor application.
- In addition to the standard versions shown here, customized inductors are available to meet your exact requirements.



Mechanical Dimension:



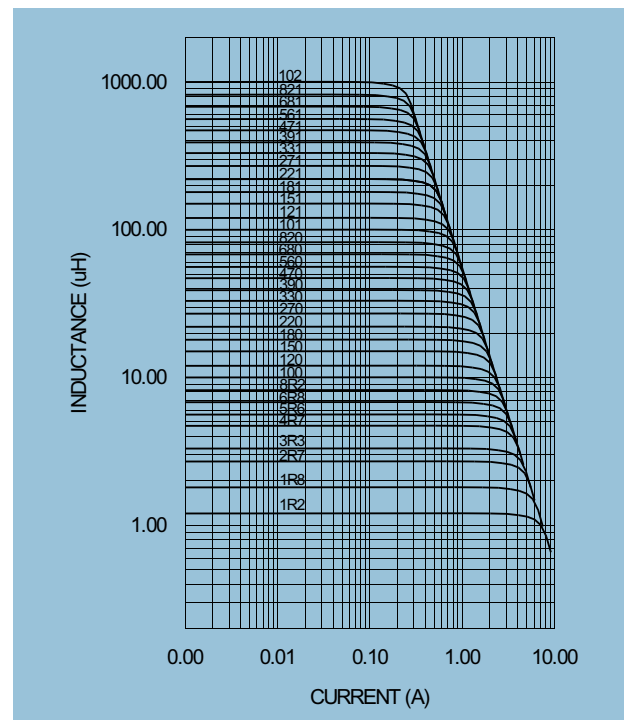
RECOMMENDED PAD PATTERNS



UNIT:mm/inch
 A = 13.0 / 0.512 Max.
 B = 13.0 / 0.512 Max.
 C = 3.5±0.3 / 0.138±0.012
 D = 4.0 / 0.157
 E = 2.0 / 0.079
 F = 8.6±0.1 / 0.339±0.004

Electrical Characteristics: 25°C: 1KHz, 1V

| PART NO. | L ¹ (uH) | DCR (Ω)MAX | I _{rated} ² (A dc) |
|--------------|------------------------|---------------|---|
| SIWC1335-1R2 | 1.2 | 0.013 | 5.10 |
| SIWC1335-1R8 | 1.8 | 0.014 | 4.30 |
| SIWC1335-2R7 | 2.7 | 0.015 | 3.80 |
| SIWC1335-3R3 | 3.3 | 0.017 | 3.40 |
| SIWC1335-4R7 | 4.7 | 0.022 | 2.80 |
| SIWC1335-5R6 | 5.6 | 0.026 | 2.70 |
| SIWC1335-6R8 | 6.8 | 0.029 | 2.30 |
| SIWC1335-8R2 | 8.2 | 0.033 | 2.00 |
| SIWC1335-100 | 10.0 | 0.039 | 1.70 |
| SIWC1335-120 | 12.0 | 0.042 | 1.50 |
| SIWC1335-150 | 15.0 | 0.052 | 1.40 |
| SIWC1335-180 | 18.0 | 0.054 | 1.30 |
| SIWC1335-220 | 22.0 | 0.071 | 1.20 |
| SIWC1335-270 | 27.0 | 0.088 | 1.10 |
| SIWC1335-330 | 33.0 | 0.105 | 1.00 |
| SIWC1335-390 | 39.0 | 0.114 | 0.96 |
| SIWC1335-470 | 47.0 | 0.134 | 0.80 |
| SIWC1335-560 | 56.0 | 0.154 | 0.75 |
| SIWC1335-680 | 68.0 | 0.179 | 0.71 |
| SIWC1335-820 | 82.0 | 0.220 | 0.62 |
| SIWC1335-101 | 100.0 | 0.260 | 0.55 |
| SIWC1335-121 | 120.0 | 0.317 | 0.53 |
| SIWC1335-151 | 150.0 | 0.374 | 0.48 |
| SIWC1335-181 | 180.0 | 0.480 | 0.41 |
| SIWC1335-221 | 220.0 | 0.578 | 0.39 |
| SIWC1335-271 | 270.0 | 0.689 | 0.35 |
| SIWC1335-331 | 330.0 | 0.820 | 0.32 |
| SIWC1335-391 | 390.0 | 1.004 | 0.30 |
| SIWC1335-471 | 470.0 | 1.220 | 0.27 |
| SIWC1335-561 | 560.0 | 1.479 | 0.23 |
| SIWC1335-681 | 680.0 | 1.680 | 0.20 |
| SIWC1335-821 | 820.0 | 2.124 | 0.21 |
| SIWC1335-102 | 1000.0 | 2.640 | 0.18 |



1. Tolerance of inductance : ± 20%.
2. I_{rated} is the DC current which cause the inductance drop less than 20% of its nominal inductance without current and the surface temperature of the part increase less than 45°C.
3. Operating temperature: -20°C to 105°C (including self-temperature rise).



DELTA ELECTRONICS, INC.

(TAOYUAN PLANT CPBG) 252, SAN YING ROAD, KUEISAN INDUSTRIAL ZONE, TAOYUAN SHIEN, 333, TAIWAN, R.O.C.

TEL: 886-3-3591968; FAX: 886-3-3591991

http://www.deltawww.com